

# How to Use the Port Authority® Mask Kit

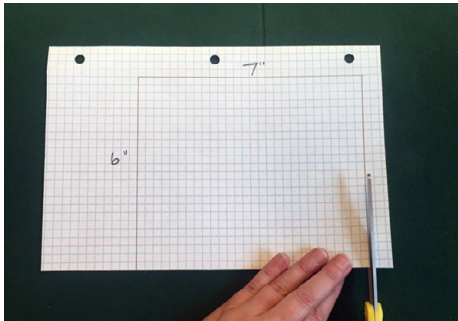
PORT AUTHORITY®

These instructions are for sewing face masks using the Port Authority® Mask Kit. These masks are not recommended for use in a surgical setting or where significant exposure to liquid bodily or other hazardous fluids may be expected, but may be used for additional face protection when FDA-cleared masks are unavailable.



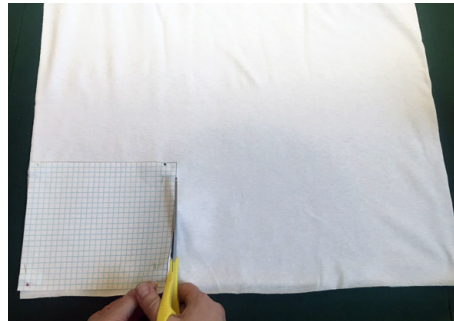
## How to make a mask:

**1**



Cut a 7"x6" paper rectangle to use as a pattern.

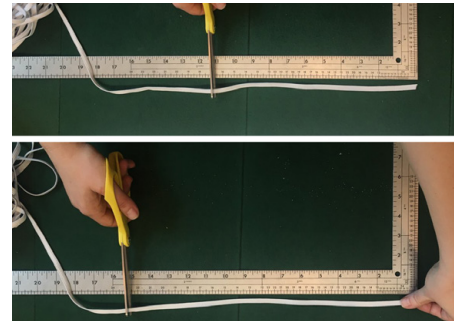
**2**



Using this pattern, cut the fabric yardage into (100) 7"x6" panels.

- The 7" side of the pattern should be aligned with the 44" side of the fabric yardage.
- There will be some fabric left over.

**3**



Cut the elastic into the sizes you will need:

- (50) 11-inch pieces
- (50) 15-inch pieces

**4**



Place one fabric panel right side up and secure one of each size of elastic to the panel corners with a reverse stitch or back tack.

- The mask is initially sewn inside-out to create a clean finish in the final product.
- Elastic straps should run the full length of the fabric panel.

5



Gather excess elastic in the center of the panel.

- This will be pulled out in Step 8.

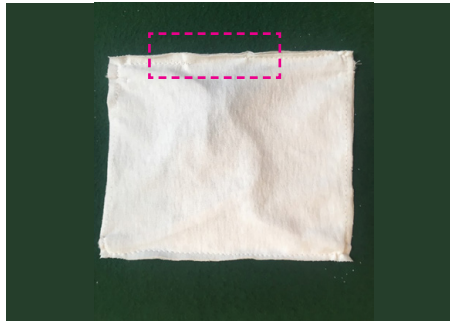
6



Place the second fabric panel over the first one, right side down and with all edges aligned.

- Use straight pins to secure the corners in place.
- Tip: Amateur sewers may want to pin the entire perimeter of the fabric to hold panels in place.

7



Add a single-needle edge stitch along the fabric edge, leaving a 1.5" opening.

- For better reinforcement, reverse stitch over the elastic straps.

8



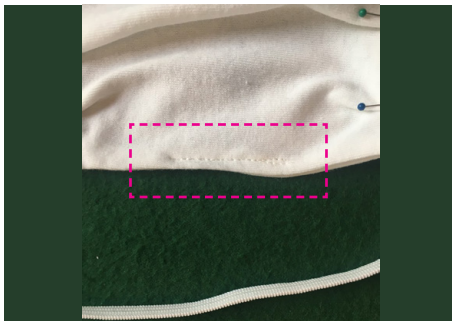
Turn the mask inside-out, using the opening you left in the edge stitch.

9



Lightly tug on all four straps and smooth the fabric with your hand until the mask lies flat.

10



Sew the 1.5" opening closed with a single-needle stitch.

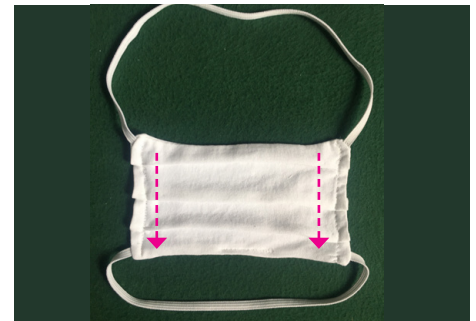
11



Form three small, evenly-placed pleats along each side of the mask.

- Pin these in place if needed.

12



Add a single-needle stitch along each side seam to secure pleats.

- Sew in the direction of the pleats.
- For better reinforcement, reverse stitch over each pleat.

**Your mask is complete! Go back to step 4 to start the next one.**



View an instructional video by clicking this link.

Finished measurements: ■ 14.5" upper strap ■ 10.5" lower strap ■ Mask fabric: 6.75" x 3.5"